



PROLINNOVA

PROMoting Local INNOVAtion
in ecologically-oriented agriculture and natural resource management

Prolinnova Global Partnership Programme: Relevance for Asia-Pacific

Pratap K. Shrestha
Country Coordinator, Prolinnova Nepal Programme

Expert Consultation to Review Progress of Agricultural Research
Networks and Consortia in Asia-Pacific

8-10 October 2007
ICRISAT, Hyderabad, India



PROMoting Local INNOVation (PROLINNOVA)

PROLINNOVA is a global partnership programme spearheaded by NGOs to:

- ✚ Promote local innovation through identification, documentation, research and scaling up
- ✚ Strengthen R&D *partnerships* and *methods* to promote local innovation *processes* in agriculture and natural resource management (NRM)
- ✚ Integrate *Participatory Innovation Development (PID)* approaches that build on local innovation into institutions of agricultural research, extension and education



One-ox-driven plough
Nepal



Modified plough
Nepal



Winnowing fan
Nepal



Modified water mill
Nepal



Paddy thresher
Nepal



Water lift hand pump
Nepal

Local innovation

The process by which people in a given locality develop new and better ways of doing things - using their knowledge and experiences, and locally available resources on their own initiative, with or without support from formal research or development agents

Who are Local Innovators?

- ✚ Farmers / land users who develop new and better ways of farming and natural resource management
- ✚ On their own initiative
- ✚ Building on local knowledge but using ideas from both internal and external sources
- ✚ Often curious and willing to take risks
- ✚ Not "model farmers" groomed by projects to adopt transferred technologies





PROLINNOVA Vision, Mission and Goal

(formulated jointly by CPs and IST)

Vision:

a world in which farmers play decisive roles in agricultural research and development for sustainable livelihoods

Mission:

to foster a culture of mutual learning and synergy in local innovation processes in agriculture and natural resource management

Goal:

to develop and institutionalise partnerships and methodologies that promote processes of local innovation for environmentally sound use of natural resources

Historical Background

- ✚ **1999:** GFAR encouraged an informal network (mainly of NGOs) to form Global Partnership Programme to link and scale up dispersed PID activities throughout world
- ✚ **2000-02:** ETC EcoCulture (Netherlands) facilitated process of expanding network and gaining support
- ✚ **2003:** IFAD funding for pilot NGO-led multi-stakeholder planning of PROLINNOVA in 3 countries: **Ethiopia, Ghana** and **Uganda**
- ✚ **2004:** DGIS Netherlands funding for nine countries: **Ethiopia, Ghana, Uganda** (continuing)
Nepal, Cambodia, South Africa (started in 2004)
Sudan, Tanzania, Niger (started in 2005)
- ✚ **2006:** DGIS funding for 2007-10 for “up-scaling, mainstreaming and institutionalising community-led approaches to NRM: PID and Endogenous Development”
- ✚ **2006-07:** NGO-led initiatives in several new countries to join: **Burkina Faso, Mali, Senegal, Kenya, Mozambique, Bolivia, Ecuador, Peru,**

Global Partnership Programme

Countries

Ethiopia, Ghana, Kenya, Mozambique, Niger, South Africa, Sudan, Tanzania, Uganda (**Africa**), Cambodia, Nepal (**Asia**)

Regions

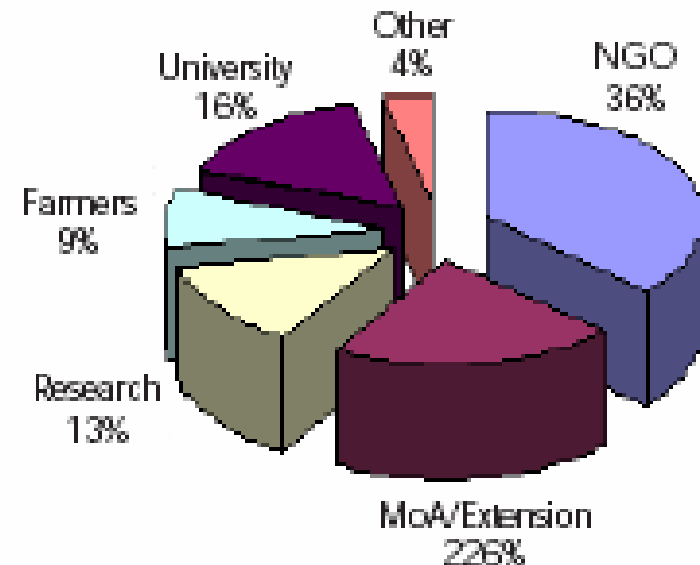
Sahel (Senegal, Mali, Burkina Faso)

South Pacific (Solomon Islands)

Andes (Peru, Bolivia and Ecuador)



Stakeholders in Peounnowa Country Partnerships





Asia PROLINNOVA Programme

Nepal PROLINNOVA Programme

Partners:

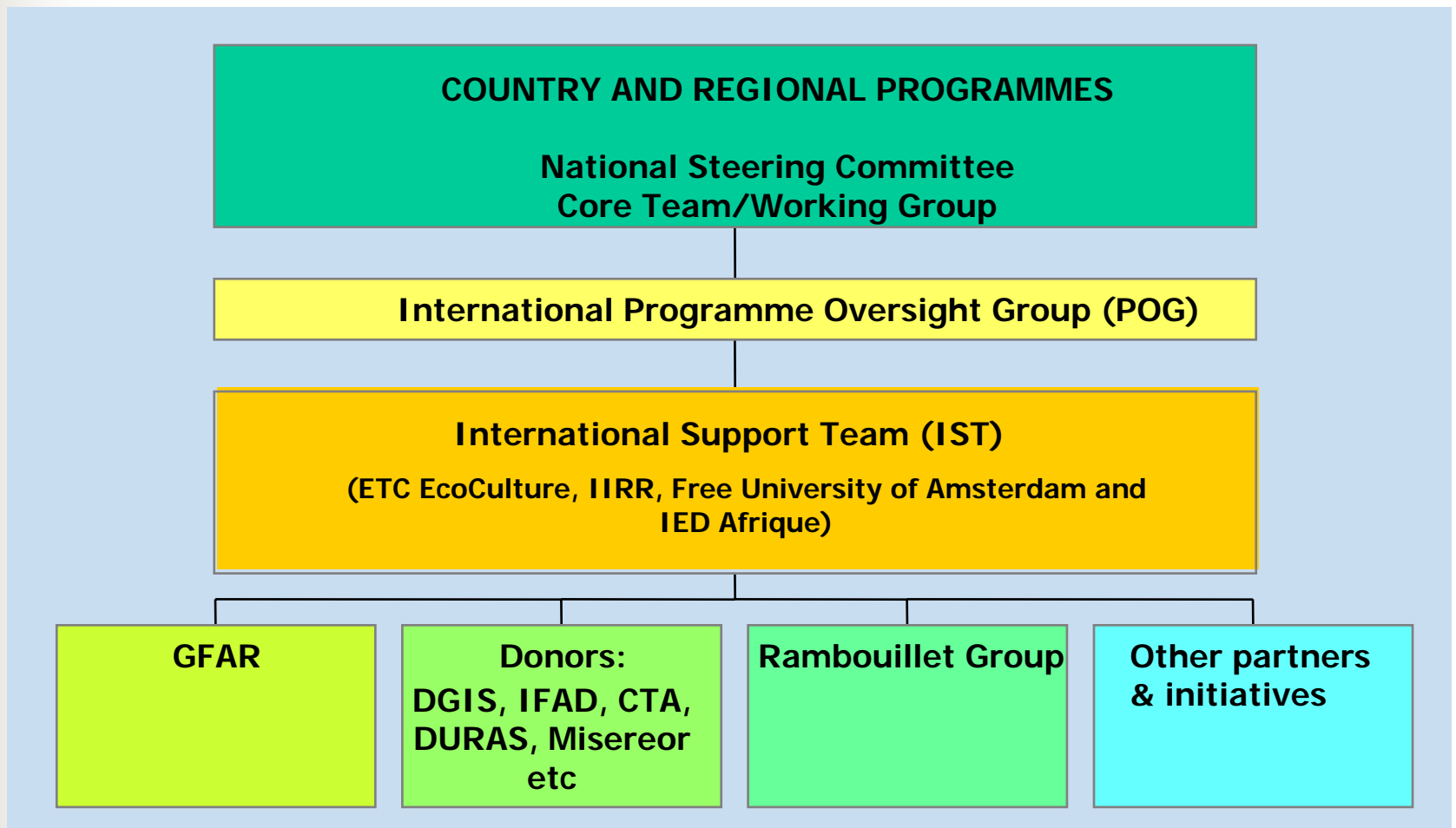
Local Initiatives for Biodiversity, Research and Development (LI-BIRD)
Practical Action
Ecological Service Centre (Ecoscentre)
Institute of Agriculture and Animal Science (IAAS), TU
Department of Agriculture (DoA)

Cambodia PROLINNOVA Programme

Partners:

4 NGOs
9 Provincial Department of Agriculture
2 Departments of Ministry of Agriculture
2 Educational institutions
2 Farmer institutions

Participatory Programme Management





Governance at Global Level

Governed Body: PROLINNOVA Oversight Group (POG)

Composition of POG):

- 4 CP representatives
(2 from Africa, 1 Asia, 1 Latin America)
- 3 external members
Beatriz del Rosario (Philippines)
Oliver Oliveros (DURAS)
Scott Killough (World Neighbors)
- 1 IST representative
(CIS)
- ETC EcoCulture *ex officio*
(Secretariat)



Funding modalities

- ✚ IST attracted funding from DGIS for partial support for implementation in nine countries
- ✚ Funding for some international activities received from World Bank, GFAR, CTA, Rockefeller Foundation, Misereor, Novib (Oxfam-Netherlands), DURAS France
- ✚ Additional resources being met by NGO Secretariats in each country and by IST (35-45%)
- ✚ Proposals are drawn up jointly to tap opportunities in specific programme areas (e.g. policy dialogue, farmer-led documentation, curriculum development)
- ✚ Local co-funding acquired at CP level: Ethiopia from ActionAid, Tanzania from EED Germany, and funding being sought by newly-joining CPs)



PROLINNOVA Programming Principles

- ✚ Recognise farmers' and pastoralists local knowledge, practices and innovations
- ✚ Local people are continuously engaged in innovation to satisfy curiosity, solve problems and meet needs
- ✚ Build on local innovation creates synergy in strengthening partnership for effective R&D
- ✚ Promote PID to strengthen local capacities and partnership to support endogenous development
- ✚ Strengthen capacities of local innovators and communities for institutionalisation of the process
- ✚ Provide social recognition (award) to local innovator further promotion of local innovation



PROLINNOVA Programme Design

PROLINNOVA Country Programme:

- + Partnership programme jointly implemented by organisations with interest in local innovation
- + National NGOs create space for exchange of experiences between major stakeholders in agricultural R&D at sub-national and national levels
- + Process guided by multi-stakeholder Steering Group and implemented by its Core Team
- + Stakeholders reflect on how to institutionalise PID in research, extension and education
- + Stakeholders jointly design their own PROLINNOVA Country Programme



PROLINNOVA Programme Design

PROLINNOVA Global Programme:

- Global Partnership Programme (GPP) built on national programmes (bottom up planning)
- Representatives from Country Programmes (CPs) plan international PROLINNOVA activities
- IST supports in coordination, networking, capacity building, website management, documentation, publishing and policy dialogue
- CPs share and analyse experiences in building partnerships in R&D and promoting local innovation
- Through electronic exchange, cross-visits and international sharing and learning workshops: Ethiopia 2004, Uganda 2005, Cambodia 2006, Senegal 2007



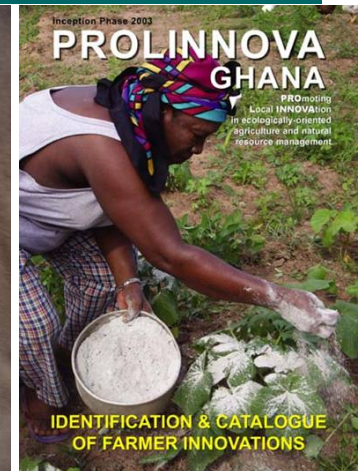
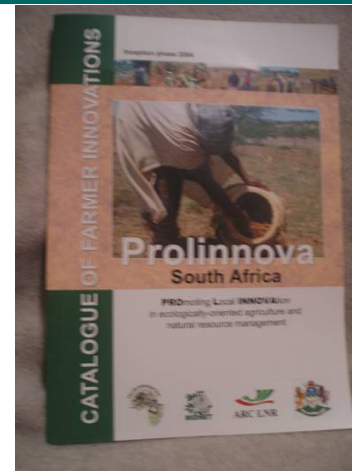
Key Elements of Country Programmes

Differ according to local experience, history and culture but have common elements:

1. Understanding (identifying, documenting and analysing) local innovation, both processes and products
2. Participatory Innovation Development (PID) to enhance local innovation
3. Building capacity in documenting local innovation, training and facilitating PID, sharing, networking and so on
4. Creating awareness, engaging in policy dialogue and institutionalisation into research, extension and education
5. Facilitating multi-stakeholder partnership building for joint action and learning

Study of Local Innovation

- More than 250 local innovations identified and documented by multiple stakeholders
- Participatory assessments, and majority selected for spread through village workshops, posters, magazines, video films and mass media
- More than 100 selected for further joint experimentation





Participatory Innovation Development

Participatory innovation development being supported on over 100 topics

Some examples:

- Soil fertility management using locally available organic matter (Cambodia)
- Wasp trapper for bee keeping enterprise (Nepal)
- One ox plough (Nepal)
- Salt lick for cattle using local minerals (Ghana)
- Low-cost underground drainage of waterlogged fields (Ethiopia)
- Termite control using local predators (Uganda)
- Various herbal treatments for pest control (several countries)

Policy dialogue

- ✚ At international, regional and national levels
- ✚ R&D events and platforms (GFAR, FARA, EFARD, APAARI, ARD etc)
- ✚ Support to universities to incorporate PID in curricula (Nepal)
- ✚ Capacity enhancing of research and extension staff
- ✚ Partnering with Government organisations
- ✚ Implementation of PID pilots with 5 Provincial Departments of Agriculture in Cambodia
- ✚ National Steering Committees involving policy makers



Community of Practice (CoP)

Sharing and learning:

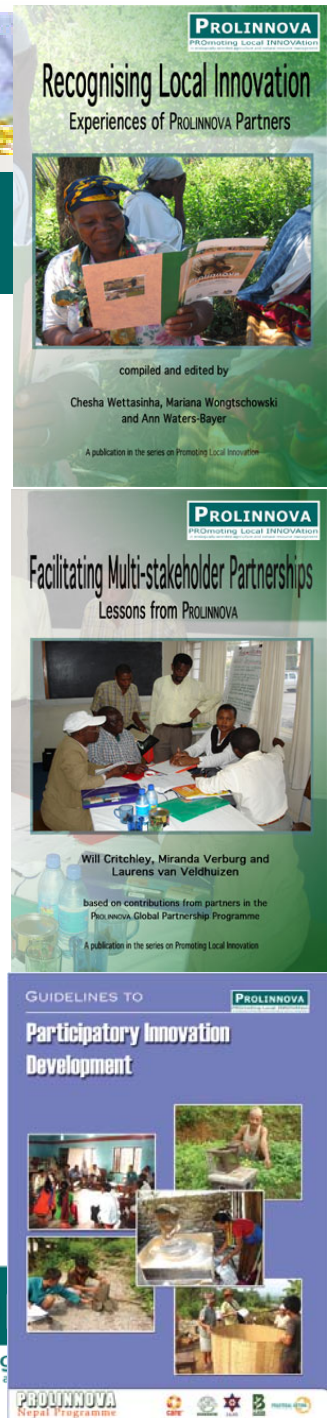
- ToF in PID, Advocacy, Farmer-led documentation
- Annual international workshops
- E-mail discussions
- Website (www.prolinnova.net)
- International conferences

Participatory M&E:

- Indicators, self-assessment, e-mail evaluation, external review

Documenting:

- PID booklet, partnership booklet, innovation catalogues





Capacity building

Capacity building activities in 2006:

- 17 people from 12 countries trained in international PID course and implemented own in-country training
- 17 people from 10 countries trained in policy dialogue and advocacy, in collaboration with PELUM (Participatory Ecological Land Use Management)
- 24 people from 11 countries trained in farmer-led documentation, in collaboration with Novib and PELUM
- More than 200 research, extension and NGO staff and farmers trained in PID over all countries

Local Innovation Support Fund (LISF)

- ✚ Exploring with farmers alternative ways of funding locally relevant R&D
- ✚ Objectives:
 - design and set up sustainable funding mechanisms to promote farmer-led R&D processes
 - evaluate, document and share experiences to learn lessons on how LISFs could effectively promote local innovation and PID and to identify necessary conditions for this
- ✚ Piloted under FAIR (Farmer Access to Innovation Resources) project with competitive grant from DURAS (Promoting Sustainable Development in Agricultural Research Systems)
- ✚ In Cambodia, Ethiopia, South Africa and Uganda
- ✚ LISF locally supported Nepal



Issues and Challenges

- ✚ Low funding for PROLINNOVA being a process oriented programme
- ✚ Need for a systematic recognition and use of farmers' knowledge and innovation in agricultural R&D
- ✚ Support for systematic study on local innovation and innovation process
- ✚ Capacity building of NGOs and NARS
- ✚ Partnership farmers, development agencies and research organisations
- ✚ NARS and IARC partnership with NGOs for promotion of local innovation and impact
- ✚ Promotion of NANGOC for NGOs in agricultural R&D

Innovating a local sprinkler (Nepal)



Thank you