



**Farmer Access to Innovation Resources
(FAIR)**

**LOCAL INNOVATION SUPPORT FUND
(LISF) WORKSHOP**

VENUE: Kenya Agricultural Research Institute (KARI)

Date: 12th – 14th MAY 2008

REPORT COMPILED BY:
PAMELA A. MARINDA

TABLE OF CONTENTS

ABBREVIATIONS	3
1.0 INTRODUCTION.....	4
1.1 WORKSHOP OBJECTIVES	4
2.0 INTRODUCTION TO PROLINNOVA KENYA.....	5
2.1 BACKGROUND INFORMATION	5
2.2 GOAL AND OBJECTIVES OF PROLINNOVA KENYA.....	6
2.4 ACTIVITIES IMPLEMENTED BY PROLINNOVA KENYA IN 2007	6
2.5 ACTIVITIES TO BE IMPLEMENTED BY PROLINNOVA KENYA IN 2008.....	7
3.0 FAIR REFLECTION: EXPERIENCES FROM PROLINNOVA'S LOCAL INNOVATION SUPPORT FUND PILOT – PHASE 1	7
3.1 WHAT IS FAIR.....	7
3.2 MAIN FEATURES OF LISF IN 5 COUNTRIES.....	8
3.3 AWARD ANALYSIS.....	8
3.4 CLARIFICATIONS, QUESTIONS AND PLENARY DISCUSSIONS	9
4.0 LOCAL EXPERIENCE IN UGANDA.....	10
4.1 INTRODUCTION.....	10
4.2 FEATURES	10
4.3 MANAGEMENT OF FUNDS.....	11
4.4 CHALLENGES.....	11
4.5 CLARIFICATIONS AND PLENARY DISCUSSIONS ON LISF/FAIR UGANDA CASE STUDY	11
5.0 LESSONS LEARNED FROM OTHER COUNTRY PROGRAMMES.....	14
5.1 LESSONS IN SETTING UP LISF.....	14
5.2 LESSONS ON IMPLEMENTATION	14
5.3 SUSTAINABILITY	15
5.4 CONCLUSION	15
5.5 ACCESS TO LISF FUNDS: GROUP DISCUSSION.....	16
6.0 LISF IN KENYA & PRESENTATION OF LISF DRAFT WORKPLAN	17
6.1 BACKGROUND INFORMATION ON LISF IN KENYA.....	17
6.2 GOAL AND OBJECTIVES OF LISF	18
6.3 PRESENTATION OF THE DRAFT WORK PLAN.....	18
6.4 GROUP DISCUSSION & SUGGESTIONS TO IMPROVE THE DRAFT WORK PLAN	22
7.0 POSSIBLE CRITERIA FOR SELECTING CBO/FARMER GROUPS TO PILOT LISF	27
7.1 CRITERIA/GUIDELINES FOR SELECTION: GROUP DISCUSSION	27
8.0 WAY FORWARD.....	30
APPENDIX 1: DRAFT LISF WORK PLAN	31
APPENDIX 2: LIST OF PARTICIPANTS.....	45
LISF WORKSHOP NAIROBI	45
APPENDIX 3: LISF WORKSHOP PROGRAMME.....	47

ABBREVIATIONS

ATIRI	-	Agricultural Technology and Information Response Initiative
LISF		Local Innovation Support Fund
CBO		Community Based Organisation
PELUM		Participatory Ecological Land Use Management
SACRED		Sustainable Agricultural Centre for Research Extension and development in Africa
RODI	-	Resource Oriented Development Initiatives
WN	-	World Neighbours
KENDAT	-	Kenya Network of Dissemination of Agricultural Technologies
PROLINNOVA		Promoting Local Innovation
FAIR	-	Farmer Access to Local Innovation Resources
KARI	-	Kenya Agricultural Research Institute
FLD		Farmer Led Documentation
NGO	-	Non Governmental Organisation
PID	-	Participatory Innovation Development
KAPP	-	Kenya Agricultural Productivity Programme
MoA	-	Ministry of Agriculture
FFS	-	Farmer Field School
TOT	-	Training Of Trainers
NACIA	-	Nalukonge Community Initiatives Association
BERMA		Busia Environmental resource Management Association
NSC		National Steering Committee
CA		Conservation Agriculture

1.0 INTRODUCTION

The Local Innovation Support Fund (LISF) is a programme within PROLINNOVA that seeks to find practical ways to set up financing mechanisms that allow local land-users, groups and communities to access funds for improving and accelerating their innovative activities. These mechanisms would remove the existing barriers to funding flows for user-led agricultural R&D. This, in turn, would be an important step in making possible the Participatory Innovation Development (PID) type of collaboration between local people and research and development (R&D) agencies that is needed to develop and spread locally relevant sustainable agriculture and natural resource management (NRM) practices. It would provide an important mechanism for continued joint development and application of local innovations.

The LISF workshop that was held between 12 -14th May brought together key stakeholders that would be directly involved in the implementation of the LISF pilot projects in Kenya. The workshop was to build the capacities of partners in the area of LISF principles and implementation and prepare and plan for FAIR implementation in the country. The workshop brought together close to 20 people: first of all people of the key organisations to be involved in FAIR 2 Kenya: four representatives from CBOs from the pilot regions, the Kenya Agricultural Research Institute (KARI) and representatives from 6 NGOs (including the two implementing NGOs, -World Neighbors and KENDAT) and Task force members.

Information presented in this report is based on the presentations, plenary discussions and group discussions during the workshop. The LISF workshop was organised by PROLINNOVA Kenya with technical support from the International PROLINNOVA Secretariat and funding from the Local Innovation Support Fund – Kenya programme.

1.1 WORKSHOP OBJECTIVES

Broad Objectives

To introduce and build the capacity of stakeholders in Kenya on the concept of Local Innovation Support Fund, and the LISF principles; and plan for the implementation of the LISF in the Kenya under the Phase 2 of the FAIR programme.

Specific Objectives

1. To introduce stakeholders to the concept of Farmer Access to local Innovation Resources (FAIR) and Local Innovation Support Fund (LISF) and launch LISF in Kenya

2. To share experiences on FAIR/LISF from countries that have already implemented LISF in the first phase and draw out important lessons from the specific country case studies
3. To present and refine the draft LISF country action plan
4. To introduce stakeholders to the concept of Farmer Access to local Innovation Resources (FAIR) and Local Innovation Support Fund (LISF) and launch LISF in Kenya
5. To develop procedures for management of LISF and select a management committee for the LISF
6. To develop criteria for selection of participating CBO's, Farmer groups, individual farmers in the LISF pilot project
7. To discuss M& E framework in FAIR, its logic and identify the roles to be played by various organisations in M&E

2.0 INTRODUCTION TO PROLINNOVA KENYA

2.1 BACKGROUND INFORMATION

- 1999: Group of (mostly) NGOs met to propose a Global Partnership Programme to promote Local Innovation and scale-up PID, encouraged by Global Forum for Agricultural Research:
- 2000: GFAR meeting endorsed NGO proposal
- 2000–02: ETC Eco-Culture (Netherlands) facilitated process of expanding network and gaining support
- In Kenya, efforts to start the network were by various people/org: ITDG East Africa, PELUM Kenya, Mr. Mburu, etc
- In a meeting held on the January 17, 2007, participants from 25 organizations came together to identify the broader issues to be tackled by PROLINNOVA Kenya and launched PROLINNOVA Kenya

Task Force Member Organisation

- 3 SACRED Africa
- 4 PELUM – Kenya
- 5 SACDEP
- 6 KENDAT
- 7 Kenya Agricultural research Institute
- 8 Jommo Kenyatta University of Agriculture and Technology
- 9 RODI Kenya
- 10 World Neighbors

2.2 GOAL AND OBJECTIVES OF PROLINNOVA KENYA

To recognise the dynamics of indigenous knowledge and enhance the capacities of farmers to adjust to change, develop their own innovations and appropriate systems of resource management so as to achieve food security, sustain livelihoods and safeguard the environment

Objectives of PROLINNOVA Kenya

1. Develop an inventory and database of existing local innovation, innovators and partner organisations in Kenya;
2. Build the capacity of stakeholders in agricultural research and development using participatory approaches;
3. Develop a strategy on advocacy and lobbying in order to create awareness among stakeholders on local innovation;
4. Create and strengthen partnerships between stakeholders to refine local innovations and encourage their use;
5. Set-up multi-stakeholder platforms for reflection, analysis and learning about promoting local innovation, in-country experience, strengths and weaknesses in developing and promoting local initiatives in Kenya;
6. Develop a framework through which monitoring and evaluation as well as validation of local innovation may be accomplished.

2.4 ACTIVITIES IMPLEMENTED BY PROLINNOVA KENYA IN 2007

The following activities were implemented by PROLINNOVA Kenya in 2007:

- Production and dissemination of information on PROLINNOVA
- Organizing and holding of the first PROLINNOVA Kenya National workshop
- Organizing and holding of a Participatory innovation development (PID) training workshop
- Participation of two representatives from PROLINNOVA Kenya to the international PROLINNOVA PID training in Addis Ababa Ethiopia
- Farmer Led Documentation Workshop (PELUM-Kenya)
- Mobilization of resources
- Networking with relevant institutions e.g. Ministry of Agriculture, KENFAP, MATF, KARI

2.5 ACTIVITIES TO BE IMPLEMENTED BY PROLINNOVA KENYA IN 2008

The following activities will be implemented by PROLINNOVA Kenya in 2008:

- Innovators forum: Organize and hold a one day meeting with farmer innovators;
- Organize a follow-up meeting bringing together farmer innovators, researchers from academic and research institutions;
- Organize and hold presentations on PID and Local innovation at Moi University, Egerton, JKUAT – for institutionalization of PID
- Field visits: Farmer to farmer exchange visits
- FLD: Organise and train farmers on FLD processes
- Document local innovations and disseminate
- PID training: organize and hold two training sessions on PID
 - TOT PID training for extension agents
 - PID training focusing on IPR Policies in Kenya, identification of IPR issues that need to be addressed with regard to local innovation
- Form sub-committees to spearhead implementation of particular issues/activities: activities to be led by TF members & members of the committees to be drawn from the partner organizations
- Develop strategy for the implementation of LISF pilot projects

3.0 FAIR REFLECTION: EXPERIENCES FROM PROLINNOVA'S LOCAL INNOVATION SUPPORT FUND PILOT – PHASE 1

3.1 WHAT IS FAIR

- It is about establishing **Local Innovation Support Funds** (LISFs)
- It makes experimentation and learning **funds accessible to resource poor farmers** to support local innovation that emanate from the creative thinking & practices of farmers
- It seeks to establish **sustainable mechanisms** at local level and that of the “support project”

Period of piloting

- In 2005, a two-year grant from DURAS for Cambodia, Ethiopia, South Africa & Uganda: ends March 2008
- LI-BIRD in Nepal started own pilot in 2004

- Hoping for further funding from Rockefeller; no longer hoping!!! LI-BIRD in Nepal will now get some funds to implement LISF
- Adding three new pilots in Ghana, Kenya & Tanzania

3.2 MAIN FEATURES OF LISF IN 5 COUNTRIES

Country	Application logic	Structuring mechanisms	Type of research funding	Scale
Cambodia	Farmer with their Farmer Association apply	Builds on existing groups that have saving & lending activities	Loan plus interest (2-4% pm); if experiment failed interest free loan	Three provinces
Ethiopia North	Farmer applies to NGO	From NGO to group/individual	Grant; 20% equity contribution	1 District/Wareda
Ethiopia South	Farmer applies to CBO	From CBO to farmer	Grant; 20% equity contribution	1 District/Wareda
Nepal	Farmer applies to Prolinnova Committee	Contract, deposit in account or cash in stages from NGO	Grant	National moving to local
South Africa	Farmer applies to multi-party panel	Contract with farmer from NGO, moving to CBO	Grant; 20% equity contribution	Three villages
Uganda	Farmer applies to farmer Cmte. set up by CBO	Contract with farmer, CBO bank account	Part loan, part grant, variable across sites	Four districts

3.3 AWARD ANALYSIS

Country	Applic-ations	App-rov-ed	Female (individ. apps)	Range of size of award (US\$)	Observations: Individuals vs Groups
Cambodia	81	57	30%	9 – 105	Individual applications filtered by group
Ethiopia North	10	10	20%	75 – 285	Individuals
Ethiopia South	11	10	25%	220 - 310	All groups of 4-5 people
Nepal*	39	21	0%	48 - 730	Mostly individual
South Africa	53	7	20%	728 - 2,334	Mixed/ unisex groups & individuals

Uganda	80	55	47%	23.5 – 117.60	Three group applications only
TOTAL	274	160	28.4%		

3.4 CLARIFICATIONS, QUESTIONS AND PLENARY DISCUSSIONS

1. *Can the same CBO apply more than once and were they funded once a year? Applications were spread over time?*

Yet to decide how it should be done depending on how the community wants it whether once or more than once. CBOs got one grant to do implement. CBOs may be allowed funding for second year as funding for first year may not be sustainable/enough to carry out all activities just within one year. This is not design based but it is what is happening in some countries.

2. *Who is managing funds in the countries?*

In South Africa it's an NGO, in Uganda the CBO and the farmer groups are in control , in Cambodia CBO receives and distributes the money. All countries are moving towards the CBOs controlling the funds.

3 *Were there rates for individuals and for groups or were they the same?*

There were no rates, no limits are set.

4. *What is the selection criterion for participation?*

In most countries there are two levels of selection: 1. between projects and NGOs, assessment is done. Secondly, the farmer applies for the funds to do her/his own individual experimentation. If the farmer application is found good by the selection committee he is selected. e.g Uganda has selection criteria.

5. *Data collection for LISF projects - did it apply across all countries?*

Cambodia had better data/information included in the report. Data drawn from farmer experiment is tricky to get.

Suggestion: if students are attached to individual farmers they can assist to get the data that is required. Farmers can also be asked to provide data on whatever experiments they are engaged in. Some groups use audio cassettes to record activities and reporting is done.

6. *The challenge is how do we bring researchers on board?*

It depends on each country. For some countries they prepare their budgets in such away that farmers budgets are slightly high, and in there is a component to take care of the researcher who will be supporting the farmer and/ involved in the joint experimentation.

The complication comes in when several partners are involved, every partner comes with their own way of doing things. However, for researchers, they can try to access funds through the Kenya Agricultural Productivity Programme (KAPP). KAPP provides grants which are likely to be an avenue to capture researchers where LISF might not cover. Partners in Kenya should find ways of how farmers in LISF pilot projects can also benefit fro KAPP.

4.0 LOCAL EXPERIENCE IN UGANDA

4.1 INTRODUCTION

- Nalukonge Community Initiatives Association (NACIA) was involved at the initial stages
- Environmental Alert (EA) visited to inform them of LISF in April 2007
- Executive meeting in April to chart ways of managing & administering the LISF
 - Considered ProInnova guidelines
 - Drafted rules
 - Set maximum level of award
- General Meeting in June 2007
 - Members informed about the LISF
 - Discussed the rules, passed with some amendments
 - Guidelines read and explained to members
 - Decide on the Pay Back policy
 - Call for applications
- Environmental Alert visited, met Executive Committee to ascertain capacity to handle funds
- Aug 07: Contract signed with EA, cheque received and banked in NACIA account
- Sept – Oct 07: Receipt and screening of applications
- Sept – Nov 07: Funds disbursed to approved applicants
- Dec 07: Executive Committee starts monitoring

4.2 FEATURES

- Locally designed pilots, building-up to higher level structures
- Building on local processes and CBOs/ groups
- Multi-partner based

- Funds incentivise and support farmer focusing on innovation
- Spurring demand-driven R&D action

4.3 MANAGEMENT OF FUNDS

- NACIA already had a good track record in fund management
- A special account was opened for LISF
- Three signatories
- Books of account are kept
- Financial reporting to EA

Benefits of LISF

- Some benefits from LISF pilots are mainly long term and will come gradually
- Instant benefits include: *mentioned above*
- Long term benefits- *Growth of pastures when the degraded areas recover leading to increased productivity of livestock (milk, meat), Improved fertility of the soils where the night holding paddocks are established, Savings on fencing materials where live fences have been established and water reservoirs constructed*

4.4 CHALLENGES

- Farmers plots were widely scattered making supervision difficult and costly
- Late submissions of applications by members led to delays in disbursement
- The distance from NACIA office to bank was long (80km) contributing to the high cost of transport
- Understanding and internalising the LISF guidelines and what it is all about
- Group executive committee were also LISF applicants and also assessment and vetting committee

4.5 CLARIFICATIONS AND PLENARY DISCUSSIONS ON LISF/FAIR UGANDA CASE STUDY

1. *What experience did Uganda have before LISF? Are they older than Kenya in PROLINNOVA?*
 PROLINNOVA Uganda is older than Kenya. EA had experience working with local CBO's on other PROLINNOVA activities and their won activities as an NGO. Funds had not been managed funds at community levels in Uganda.

2. *Were farmers applying for LISF funds as individuals?*

They were working much in groups. Use money to do what one applied for. There were six Community Based Organisation of whom each got USD 1000. Ronald Lutalo Coordinator PROLINNOVA Uganda & Mugume Paul one of the farmers who implementing LISF in Uganda went to areas and selected some of CBOs to participate in LISF.

3. *At what level was the funds disbursed?*

There were two levels at which funds were disbursed: 1. to Community Based Organisation and others to individuals who were members of CBOs.

4. *Who comprised the screening committee of LISF and how were members involved?*

Committee comprised members of the participating CBOs, with support from Environmental Alert as the coordination agency. The groups selected were involved in the feasibility study and members training session. Members implemented the LISF pilot projects (after selection).

5. *Who developed the selection criteria for selecting CBO/farmer groups to pilot LISF at community level?*

Representatives from CBOs/farmer groups, and other partners within the Uganda country programme participated in preparing the guidelines for selection

6. *What were the challenges faced amongst the groups?*

To ask Ronald Coordinator in Uganda for details.

7. *Two groups participating in LISF were situated around Kampala (basically urban) and the other two groups were outside Kampala (more rural). Was there any difference in terms of impact of LISF on the groups?*

This was not presented at the IPM workshop. At the workshop only general impacts were presented.

8. *Was a baseline survey done?*

Only a feasibility study was done.

Suggestion: carry out a baseline for each province. This is important as information on current situation in the country will be provided to stakeholders.

9. *Have farmers been making contributions towards LISF activities?*

Farmers were paying some fraction of the total cost so as to cater for farmer to farmer exchange visits – Cross visits have been accepted by LISF not strictly experimentation. The farmers are

requested to pay so that only genuine ones can participate in the activities and also for commitment.

10. Sustainability: What did Uganda mean when referring to sustainability of LISF funds within the Uganda pilot projects?

They meant having the funds available for a longer period of time and having the farmers benefiting from the fund. At CBO level, they encourage and make individuals part and parcel of LISF and to transform it from a project funded by Rockefeller into an entity that can attract major donors and local participation and funding.

11. To what extent have researchers been involved?

Farmer groups /innovators have not involved researchers in countries where the first phase was implemented except for the case of LI-Bird in Nepal. There is need for more involvement of researchers and other stakeholders e.g. ministries of agriculture and livestock development.

12. Does the fund operate as a revolving fund in all countries?

It depends on how the country wants operate the fund and the procedures the partners in the country develop. In some countries, LISF operates as a revolving fund, in others it is not; farmers are asked to show commitment of about 20% for them to be eligible for the funding.

13. Was Uganda case the best?

Uganda case was selected because the conditions in Uganda are very similar to those in Kenya and therefore the partners within the Kenya country programme could learn from them. Partners will be presented with copies of the LISF case studies from South Africa, Cambodia and Ethiopia for more information and to draw important lessons from the case studies.

Comments on Uganda case study

Uganda case limits the LISF funds to CBO and farmer groups, hence individual innovators should be encouraged to apply and considered when disbursing the funds.

Do we need to set criteria for individual innovators? If such people are identified they should be linked to CBOs because it is easier to manage funds if disbursed to CBOs.

LISF funding should not only be limited to Agricultural/NRM - other areas should also be considered e.g. value addition. The innovation may not be agricultural but may promote agricultural based initiatives. It

is necessary to have a wider development agenda on LISF. Experience in handling funds should be considered at all levels: individual, community level.

5.0 LESSONS LEARNED FROM OTHER COUNTRY PROGRAMMES

- Farmers have ideas and can solve some of their problems in agriculture (technically, financially and mobilized)
- Local knowledge may solve some agricultural problems faster and more cheaply than scientific approaches (*night holding paddock tactic of soil fertility recovery and the live fences*)
- Assistance going directly to the farmers acts faster and at a less cost than that channeled through formal administrative units

5.1 LESSONS IN SETTING UP LISF

- LISF management needs to be **decentralised** to the maximum extent possible
- Work with **existing CBO/groups**, experienced in participatory R&D; good local NGO needed to support this (= conducive environment).
- **Complementary activities** needed to help create an enabling environment when above does not exist
- Principle of (partial) **payback** of funds by farmers important
- **Level of payback depends** a/o on what the grant money was used for (farmer's own experimentation only versus also costs of research or extension support staff)
- In most cases **many costs** of LISF experiments are hidden (carried by other sources, projects). These need to be made explicit

5.2 LESSONS ON IMPLEMENTATION

- LISF approach is new, relatively complex to grasp and implement **at all levels**
- It **needs time** and discussion to understand LISF purposes at all levels, to try out, to improve, etc.
- **Partner selection** is very important. Most pilots are experiencing uneven participation from research / extension partners
- **Effective** application, screening and fund disbursement **mechanisms** developed.
- In 4 out of 160 grants, diversion in use of funds
- Continue focus on **farmer or joint experimentation** (not investments)

- **Improve M&E** and documentation:
 - More attention to impact on livelihood security
 - Capturing of experiments' data and findings
 - Methods include grantee written reports, oral presentations to meetings, audiovisuals
 - Focus Group Discussions for “the voice of the farmer”
- From this M&E we will be more **empowered to influence** other actors
- Need to strengthen the involvement of **formal research groups** in LISF supported activities to:
 - Bring in relevant expertise and skills;
 - Add more legitimacy to the process, and
 - Enable mainstreaming

5.3 SUSTAINABILITY

Sustainability at local level

- There are **good initial pointers on LISF sustainability at local level**, e.g. from Cambodia/ Uganda
- **Repayments** have started; supported by previous group-based savings and credit practices
- Other country pilots are pursuing similar options

Sustainability at higher level

- Strategies for **sustainability** and institutional arrangements **for facilitating spread of community-based LISF (the “project”)**, have yet to be developed
- (Local?) Government research and extension and their **funds have to be leveraged for this**:
Involve them therefore from the start

5.4 CONCLUSION

- First pilots show **very promising dynamics** when farmer groups/CBO start managing LISFs
- Most grants at this initial stage are **small** mostly for supporting farmer own experimentation
- With increased experience of CBO-LISF **larger grants for joint experimentation** may start
- Need for **M&E of impact** in due course
- **Sustainability of the LISF “support project”** needs attention in next phase

“an innovation support instrument may decide to support not only innovations or innovators per se, but also the promotion of a culture of innovation and learning in local communities with a view to the empowerment of resource-poor people and their communities.” (Friis-Hansen & Egelyng, 2007)

5.5 ACCESS TO LISF FUNDS: GROUP DISCUSSION

Task: Discuss and provide suggestion on how the LISF funds in Kenya should be accessed by CBOs/farmer groups.

Group I:

Suggestions:-

Make at least the key issues known to members including timeframe, source information to the interested and learn how they came to know about LISF, screen the applicants at two levels; visit the group to see the activities, application form or an overview of the format of the application form with information on name, membership , coverage etc. consider individuals doing innovative things, experience in handling funds the task force to draw up clear guidelines on management and disbursement of funds.

Group II:

Suggestions:

Have a look at current group activities to determine the type of groups e.g. welfare, its length of existence, registration certificate, constitution, minutes of group , size of group 15 – 30 members.

Take in to account the experience of the group: group activity history, group leadership , capacity in handling funds – has the group handed own general finds, financial records, capacity building history (especially office.), other capacities – training records, accountability /transparency, information sharing capacity (access visitors book etc).

Group III:

Suggestions:

Interest of CBO group in piloting LISF - the group should justify this during application, group should be willing to volunteer to carry out some activities and it should be committed. CBO/groups should be well established – should be registered, CBO preferably in existence for six months, have a management structure, experienced with participatory development, experience to handle funds – good accounting, good linkages/networking.

6.0 LISF IN KENYA & PRESENTATION OF LISF DRAFT WORKPLAN

6.1 BACKGROUND INFORMATION ON LISF IN KENYA

- At the International PROLINNOVA Meeting (IPM) in Senegal in March 2007, a presentation was made that focussed on the 1st Phase FAIR/LISF. Countries such as Uganda, Ethiopia, Cambodia, South Africa were in the process of implementing LISF.
- Kenya (through the country coordinator present at the IPM) expressed interest in LISF
- In October 2007 countries that had expressed interest were requested to submit a concept note. The countries included Kenya and Ghana. Kenya submitted a short concept note to the Secretariat. The PROLINNOVA Secretariat requested the country programmes to select LISF implementing partners.
- In a Task Force meeting held on 19.10.2007, World Neighbors was selected to be the coordinating organisation in implementing LISF pilot projects. KENDAT was selected as the second partner organisation and KARI was selected as the institution that would be responsible for M&E within the LISF

Why World Neighbours

- Areas of focus: sustainable agriculture and rural livelihoods, community based natural resources management and community reproductive health
- Work on cross cutting themes: gender and HIV/AIDS, capacity building
- Has experience with facilitating local innovations
- 3 staff members already trained on Participatory Innovation Development (PID)

Why Kendat

- Its work focuses on empowering local communities in agricultural technologies
- Experience with implementation of various programmes on conservation agriculture
- Responsible for LISF pilot activities in Eastern Province

Why KARI?

- National research institution that develops and disseminates technologies to increase productivity
- Experience with participatory approaches
- Existing KARI led FFS will be used for demonstration and dissemination of information on Innovations within the LISF

- Role in the LISF:
 1. Researchers to support farmers in innovation development
 2. M&E of the pilot projects

6.2 GOAL AND OBJECTIVES OF LISF

- Create conditions for farmers to play a more decisive role in R&D in agriculture and NRM
- Done by strengthening local control over processes of innovation in sustainable land management in ways that contribute towards improved food security and livelihood
- Focuses on financing and funding mechanisms from local level upwards, co-owned, and managed by local land users, their orgs, and/supporting civil society

Objectives of LISF pilot projects

- To assess the effectiveness and impact of local innovation Support Funds (LISFs) as a mechanism to accelerate local innovation
- To build the capacities of stakeholders at all levels to use, manage, monitor and evaluate the LISFs
- To share the findings of the LISF pilots and create awareness and acceptance of the LISF among regular R&D organisations

6.3 PRESENTATION OF THE DRAFT WORK PLAN

The draft workplan prepared by the PROLINNOVA Kenya coordinator during the LISF write shop held in Tamale, Ghana (27 – 30th March, 2008) was presented to participants. Presented to participants were the objectives of LISF in Kenya, activities to be implemented and organisations responsible for implementing the activities, expected outputs and methods of verification (For a detailed draft work plan go to the appendix). During the two and a half day workshop, participants present were expected to discuss the activities, responsible parties for each activity, outputs and means of verification as given in the draft workplan.

PROPOSED MANAGEMENT STRUCTURE

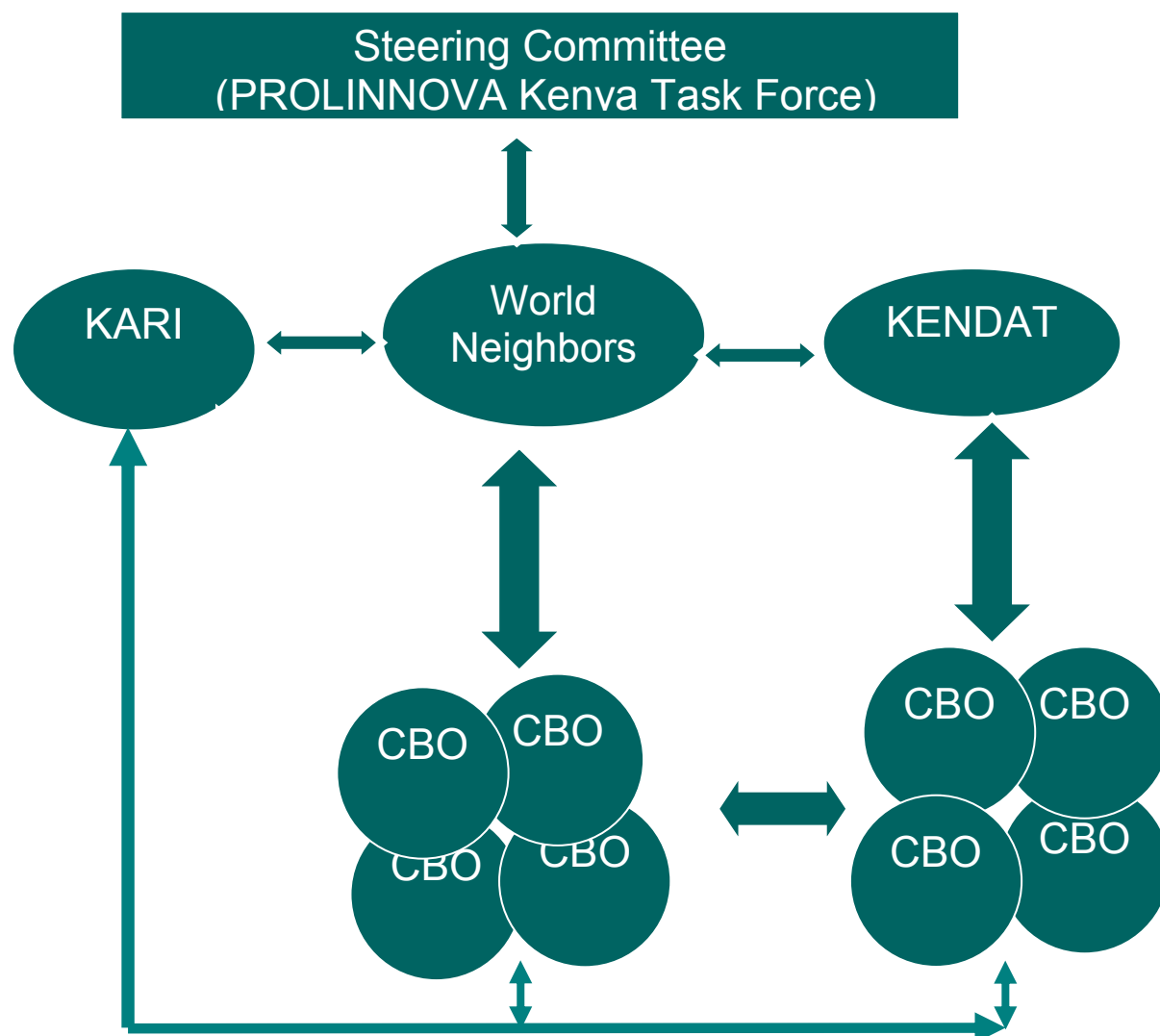
- Steering Committee: The PROLINNOVA Task Force would serve as the steering committee for the LISF pilot projects
- Coordinating agency: World Neighbors was selected as the main coordinating agency of the LISF pilot projects. World Neighbours would be responsible for the overall management of the

LISF pilot projects at the national level and also be responsible for financial management of the LISF fund at the national level. The partner organisations i.e. KENDAT and KARI would work closely with World Neighbors and report on the progress on the different activities they will be implementing within the LISF context. World Neighbours would also be responsible for the CBOs in the Western region

- Partner organisations: KENDAT is the partner organisation responsible for LISF implementation and financial coordination of LISF funds in the Eastern region. It will work closely with CBOs and farmer groups in Eastern region. KENDAT will work closely with World Neighbors and KARI; and provide progress reports to World Neighbors on activities in the Eastern region. KENDAT would explore the possibility of using community parliaments in making major decision on LISF
- Monitoring and Evaluation: KARI is the second partner organisation responsible for Monitoring and evaluation of the LISF pilot projects
- CBOs and Farmer groups: These would be involved from the onset of the LISF pilot projects in the design, implementation and M&E. CBOs and Farmer groups from the western and Eastern regions would exchange ideas/experiences through exchange visits organised by the farmers, World Neighbors and KENDAT. KENDAT intends to explore the idea of using community parliaments in Eastern Province in making major decisions regarding management, selection of LISF activities and groups/individuals to participate in the LISF.
- PROLINNOVA Kenya Partners: The other PROLINNOVA Kenya partners (totalling to about 20 - comprising NGOs, CBOS, academic institutions, farmer groups) will be involved in the LISF pilot programmes in various ways. Organisations and CBOs who are members of PROLINNOVA Kenya and located in areas where LISF pilots will be piloted i.e. Western and Eastern region will participate in the regional trainings and LISF activities organised in those areas. Others will also be in a position to attend national trainings, and LISF activities that will be organised at national level e.g. farmer forums, trainings workshops on Participatory Innovation Development (PID), Farmer led documentation (FLD) and other trainings on local innovation. They will also participate in other activities (not under LISF) organised by the PROLINNOVA Kenya country programme.

Figure1 shows the interrelationship between the different partners in LISF

Figure 1: A diagram showing the interrelationship between the partner organisations and CBOs in the LISF Pilot projects



PLENARY DISCUSSIONS/QUESTIONS/CLARIFICATIONS

1. Q. Is there an existing M&E guideline or protocol of LISF or there is need to develop one.

There is one M&E framework already in place. It was developed extensively with main actors implementing LISF pilot projects (not with farmers). It will be made available to the country programme coordinator and can be operational. It is a joint learning across 8 countries- and there is room for improvement. Framework should remain the same for ease of comparison between countries implementing LISF. However, it can be changed, depending on different local conditions. KARI is responsible for M&E and therefore can assist in making it adaptable to Kenyan conditions, where feedback can be obtained from farmers.

2. Q. What is the fine line between firm investment and LISF

Investment does not have to be strictly in agriculture &NRM and can involve such things as construction of structures etc. For LISF farmers have access to funds to help them do experimentation or develop innovation. The focus is on knowledge generation, and sharing of the knowledge widely so as to improve living standards of people in a locality and improve food security.

3. Q. Is this fund only for farmers? Can research institutions and NGOs benefit?

LISF is the only funding that researchers, NGOs cannot directly access. They can work together with farmer innovators in joint experimentation and benefit from this fund in this way.

4. Can the fund be made into a revolving fund?

Partners in each country decide on whether the fund should operate as a revolving fund, grant or loan. In some instances, it is not possible for the fund to operate as a revolving fund or loan e.g If KARI works together with the farmers partners should not expect KARI to pay back the money.

5. Who applies for the fund?

Partners in the country will decide who should apply for the fund. In other countries, farmer groups, individual farmers, CBOS applied for the fund.

b. How is it relevant in Kenya.

b) Relevance in Kenya

Positive	Negative
<ul style="list-style-type: none"> • Conducive policy on service provision within the Government • Vibrant civil societies in Kenya where this can be used to reach farmers in Kenya • Farmer groups are exposed • There is already participation by all stakeholders. • Already some innovations by farmers existing. • Encourage many local innovators. • LISF – minimal funding. • Support for scaling up local innovation is building you. • Sustainability knowledge & financial • Highly relevant to Kenya as better use of resources • Resources reach development scene much sooner 	<ul style="list-style-type: none"> • Reduced government budget for extension of services • Gender bias on agricultural activities • Dependency syndrome may develop. • More focus on tangible issues and less on process • Farmers with finalised experiment would miss out from this fund.
<p>Conclusion</p> <p>More strength than weakness. Hence relevant for Kenya to start working</p>	<p>Comments</p> <p>Enforce government budget. Look at devolved funds</p>

c) Does Kenya have any relevant experiences

ATIRI – Agricultural Technology Information Research. Experience in organising farmers innovators workshop, farmer experimentation on seeds, farmer led documentation, management of funds at the local level, farmer innovators cross visits, farmer managed trials. e.g donkey for water for drip irrigation to experiment impact of irrigation and off season marketing. e.g. Solar drier for dried vegetable preservation, market off season and change to dry food. Experience of community parliament for fund management as much as process (Parliament Community- different group of communities e.g send two representatives to sit once a month, trained in microfinance running a village bank – they account themselves). Experience from Government e.g. Njaa Marufuku Kenya where communities develop proposals and manage the funds.

6.4 GROUP DISCUSSION & SUGGESTIONS TO IMPROVE THE DRAFT WORK PLAN

Tasks to be tackled in groups:

1. Discuss modalities for carrying out the activities/strategies
2. Comment on the roles of responsible parties
3. Discuss on outputs and means of verifications give suggestions for improvement

Group I

To assess the effectiveness and impact of local innovation support funds LISF as a mechanism to accelerate local innovation.

Under Activities –Add - Baseline survey to help identify CBOs / Groups to be involved in the innovations. Identification of appropriate institutional set up. Responsible parties:- WN / ETC East Africa - Overall coordination of the activity. KENDAT – Co-ordination in Eastern region. World Neighbours – Coordination in Western region. Kenya Agricultural Research Inst. – M & E in both regions

Output:- A report on viability of the project , current experiences, the current status of innovation both applied and in existence, current institutional structures. Memorandum Of Understanding:- Feasibility report, baseline survey report. Time frame – 1st quarter of 1st year.

Activity 2:- Organise a stakeholder workshop – Design the structure of LISF within the country programme, Selection of LISF criteria, developing procedure and guidelines.

Add: Establishment of local task force. Responsible persons:- World Neighbours -overall coordination, KENDAT- coordination of the workshop in eastern region World Neighbours coordination of the w/shop western region, Task force follow-up in both regions

Output:- LISF organisation structure in organisation structure in place, established local task force. Memorandum Of Understanding – workshop report, preliminary LISF selection criteria, procedures and guidelines in place.

Activity 3: Piloting of the LISF project ; - Forming the institution and registration as needed, introducing awareness generation strategy, preparation of documentation forms, criteria and means of publicising, calling for applications, process and selection of applications, informing applications and disbursement of funds to CBOs and groups. Responsible persons/institutions: World Neighbours – Disbursement of funds, KENDAT - Participate in selection, World Neighbours – Participate in selection, KARI – Participate in selection, Other identified NGOs.

Memorandum of Understanding – Number of institutions formed, prepared documentations forms, number of applications received, number of applications screened and approved, number of CBOs or groups funded. Expected out put – Well formed institutions in both eastern, western regions well prepared documentation forms, applications done by CBOs/Group in both regions

Activity 4. Conduct M& E to assess the impact of LISF pilot project, hold a workshop to develop M& E tools, systematic collection of data. Responsible persons/institutions:- Farmer organisations, CBOs, world neighbours, KENDAT, KARI. Expected out-put – M&E tools developed, data collected. MOU – Availability of raw data, M&E report, workshop report. Time – 2nd quarter of 1st year.

Baseline to be in specific regions, focus on stakeholders and CBOs. The innovations are within groups. Inventorization could be done under LISF. FOCODEP to be included in the western region – it is a Community Based Organisation not NGO hence mandated to work in a small area in its region. KENDAT etc are just facilitating organisations. All organisations to work as a team not to be left only to World Neighbours or KENDAT.

Group II

Objective 2: To build capacities at all levels to use, manage, monitor & evaluate the LISF. Three day workshop PID Western, Eastern, National

Specific roles:-World Neighbours – Facilitation in training , money disbursement, organise the western, KENDAT – organize the eastern , RODI - Facilitation in training. Task Force/PELUM – Organise the national Workshop, CBOs – Nominate representatives to the w/shop

Activity 2:- Criteria for selection beneficiaries plus much content on group dynamics Suggestion – One per year. On roles: World Neighbours – Funds disbursement, Mobilize CBOs from western participating in workshop, KENDAT – Mobilize CBOs from eastern participating in workshop, organise workshop. PROLINNOVA secretariat – Backstopping, actual attendance to workshop. Task Force – Offer guidance /advice. On outputs: move 'applications for LISF' to objective 1.

Activity 3

A two day training workshop on Monitoring & Evaluation plus farmer led documentation

Suggestions:- to have M& E trainings at the regional level (Western & Eastern).

On roles- KARI – Take leading role in organizing & facilitating, World Neighbours Offer support to KARI in Western region, mobilize CBOs, KENDAT – Offer support to KARI mobilize CBOs (Eastern region), Task Force – Offer support to KARI, SACDEP/PELUM facilitate training on FLD.

On proposed management structure suggestions:- For LISF issues, have 2 farmer representatives in steering committee (One from each region –Eastern and Western). Add proposed 'regional LISF Executive committee on the side i) with more farmers + representatives ii) With only farmers. Other comments: When there is one meeting for LISF there should be the CBOs represented from Western and Eastern.

Questions/Comments

Gender is not being taken into consideration. This to be reflected in all the activities especially in participation of both male and female members. Training workshops should be done in 1st year and not to be spread on three years.

What was the rational of putting farmer led documentation and M&E together? The two were merged for the purpose of cost cutting. Also, people are trained on M&E they will also be encourage to use FLD. FLD has more tools. National coordinator is answerable to the steering committee.

Group III

Objective 3: To create awareness and acceptance of the LISF among regular research and development (R & D) and/ share findings of LISF pilot projects.

Activities:- Modalities – Institutional visit/updates, workshops, demos, shows, websites, brochures/leaflets /field days/exhibitions. Responsibility:- World Neighbours, CBOs, PELUM Task Force

Outputs:- Access to information by all stakeholders increased, demonstration plots to support dissemination of information on innovations established, brochures and leaflets of information on innovation produced and distributed, lobby and advocacy framework developed. Means of Verification: Progress Reports

Activity 2:-

Outputs – Add: Presentation at conferences/symposia e.g KARI Biennial conference /Agricultural forum. Increased network & linkages for all stakeholders. Means of Verification – Reports, proceedings and forums

Activity 3:

Add - Reports, Records, Photograph and Video clips. Questions/Comments

Dissemination strategy should be linked to activities and linked the different organisations that can help move LISF forward.

Stakeholders to look into the achievements and failures/challenges of LISF in countries that were in FAIR Phase 1 and learn from them for up scaling purposes of LISF.

Proposal on structure by group 3

Extreme left and right have umbrella group comprised two members or composed of farmers and stakeholders who interact with CBOS directly. At Eastern & western a sub committee to be established. That is like the community parliament that already had been mentioned before. Representatives from CBOs form committees to identify the need. At that level involve the development partners be part of committee as well. Members to be available but the roles must be put up very clear. Committee should not influence the grant application CBO to organise themselves.

Q. What role has KENDAT played in parliamentary committee. They have trained and they become trainers ie ToT i.e finding a controlled channel of which information should be passed.

7.0 POSSIBLE CRITERIA FOR SELECTING CBO/FARMER GROUPS TO PILOT LISF

- Interests of CBO/group in piloting LISF (how to assess?)
- Need to be established CBO/groups
- Experienced in participatory (agricultural/NRM) development
- Experiences (or capacities?) in handling funds
- Other capacities

Possible criteria for selecting grant applications by farmers/groups

- It must be farmers' own idea that they want to experiment with
- If a technique is being developed it must be Technically, Economically, Environmentally and Socially sound.
- Idea/topic is applicable amongst the poor and vulnerable groups
- "Value addition" realized through LISF grant
- The applicant must contribute at least 20% of the costs which may be 'in kind'
- Applicant must be willing to work according to an agreed plan (MOU)
- Applicant must be willing to monitor, record progress, and report to the Group Executive Committee
- Applicant must be prepared to share his/her results with others this is through receiving visitors on their field, teaching and sharing with others and also providing a written report of their activities supported including financial reports.

Do we/CBO need to set additional criteria to guide the selection of applications?; e.g.

- Minimum of X percent of applications by women or by youth?
- Priority areas to be covered (soil fertility, animal husbandry)?

Only joint or farmer experimentation or also including other knowledge generation and knowledge spread activities (cross visits, Farmer Field School, farmer-led documentation)?

7.1 CRITERIA/GUIDELINES FOR SELECTION: GROUP DISCUSSION

TASK: Criteria for selection of CBOs, Farmer groups/ Individual farmers

Group I discussion:- Must be farmers own idea, adaptable and focused technology which focus on innovation, poor and vulnerable groups, improvement of the livelihood, value adding should be a contribution, contribution-for the new entrants since not sure of the capacity etc but for the own going it

is good to be silence and value their contributions in kind, MOU to be out instead replace with signing an agreement with guarantors (with who is an issue to be raised later e.g should it be with WN etc), applicants to share findings .

Group II discussion:- Must be farmers own idea that they want to experiment, acceptable to the committee, focus on vulnerable groups, activities to be funded should include value addition, 20% of successful applicants should be women, willingness to share, receive visitors, 20% own contribution, MOU should be in place to guide the farmers and implementing agencies.

Group III discussion: Criteria for assessing the innovation for both individual farmer group Economically not only in terms of money generation but also in terms of savings you make in using the innovation. Applicable to the community as a whole and especially to poor and vulnerable groups. Own contribution of 20% (in cash) by innovator, depending on the innovation. Visits/teaching/sharing be during LISF funding period. Free – afterwards the farmer application may decide to charge

General Comments/Questions/clarifications

In terms of value addition its vital to look at it initially – let the applicant show the value, is the value in relation to the funding? Prolinnova would want to encourage improvement of innovations.

The issue of own contribution is sensitive, however can be explored. Need to know from the farmers perspective. In ATIRI groups had to contribute something experience in the first set they indicated in monetary time. Quantify the 20% contribution.

What happens when people are funded within the LISF and quit before they implement? Be clear on the exit strategy of the application. For starters, individuals may be encouraged to apply as groups. Indicate time limit for sharing.

Plenary discussions/suggestions on criteria to guide the selection of applications

Additional criteria to guide selection group discussions

Group I:- Be flexible – i.e those with interest and innovation, priority areas – let the group themselves identify their may priority areas that will help creativity, open up to innovation drawn to other activities or forum e.g farmer field schools, farmer led documentation.

Group II:- Minimum percentage by different gender, removal of bracket and include other areas, joint experimentation plus other information sharing like field visits.

Group III:- At least 30% applications from women and youth, increase the priority areas soil fertility, value addition, marketing post harvest handling, animal husbandry , crop husbandry, NRM , solves related issues - group organisation,. Knowledge spread activities be part of the plan e.g cross visits and not a proposal of its own.

Comments/Reaction/Questions

Women and youth should not be less than 30%, it is vital to realise the participation of all groups. If there are many good innovators what measure will we use to strike out some? Awareness creation be done in both men and women and put up a measure to ensure there are enough women in the project. Have an equal representation of male and female on committee. Funded activities should be within agriculture and natural resource management.

8.0 WAY FORWARD

Activity	Responsible	Date
Improve on workplan	PROLINNOVA Coordinator	15 th May 08
Signing of the contract between World Neighbours and ETC Eco-culture	Lauren /Chris Macoloo (WN)	15 th May, 2008
Finalize on LISF workshop report Prolinnova	Prolinnova Coordinator	End of May, 2008
Key partners meetings	World Neighbours, KENDAT , KARI Coordinator	20 th May Venue: World Neighbours
Preparation for the feasibility study	KARI, ETC, ETC-East Africa, Task Force	1 st week of June
Task Force meeting Task Force	KENDAT	10 th June, 2008
Preparation of action plans by KARI, WN, KENDAT	KARI, KENDAT, WN	1 st July, 2008
Feedback from CBOs	WN, KENDAT	July, 2008

APPENDIX 1: DRAFT LISF WORK PLAN

LOCAL INNOVATION SUPPORT FUND PILOT PROJECT

Four Year Overall Plan Statement

COUNTRY: Kenya

Geographical coverage: Regions, districts, villages: How many? Which?

Regions:

The LISF will be piloted in two regions in Kenya, the Western and Eastern regions. Two districts will be involved in each of the regions, namely: Busia and Nyando Districts for the western region and Kitui and Mwingi Districts in the Eastern region. Criteria for selection of villages to be involved in the pilot project will be developed and villages to participate identified based on this criteria. Number of villages to be included will be decided upon at this stage.

Western Kenya (Nyando and Busia districts): western Kenya has for many years pioneered much developmental work in Kenya in natural resources management and agricultural productivity alongside health issues related to HIV/AIDS and Malaria. As such many NGOs are based in these areas many of which have formed consortia or networks for collaboration. With regards to LISF, we have potential partners for collaboration e.g. SCC-Vi and KUSA trust in Nyando, ARDAP and BERMA in Busia. In addition, farmers in the region have been empowered to form and maintain strong community/farmer based organisations which make it easier for entry into communities. Many have also participated in farmer led research in the region and have come up with several innovation(s). With regards to PID/LISF, the concept is new as an idea but some form of it is being done. (Some farmers are already innovating e.g. soya bean value addition, soil fertility options etc). In addition, quite a number of facilitators have been trained in the initial TOT training on PID in Nakuru hence have an idea on PID and will be able to facilitate the process. In Eastern Kenya, the LISF pilot project will be implemented in Mwingi and Machakos.

Why KENDAT intends to involve Mwingi in LISF project?

In Mwingi and Kitui FARM-Africa is running a dairy goat project. The project is basically on improving local goats to increase milk production as a means to reducing poverty. KENDAT will be in a position together with Farm Africa's involvement to build the capacity of the existing CAHWs, AHAs and vets as donkey service providers through innovative systems that will be put in place. The Mwingi/Kitui team and Government staff will help in mobilization as KENDAT carries out the training. In addition, CAHNET (Farm Africa) is currently involved in innovative systems of information sharing and problem solving through an SMS technology system. KENDAT is currently involved in the implementation of a Mobile Agricultural Information System (MAIS) that is detailed and involves more aspects of information dissemination apart from the SMS technology. Through partnering with Farm Africa in Mwingi the system will be put into use in an innovative manner to suit its recipients. Farmers in mwingi involved in the above projects and others will be encouraged to participate in the LISF

Organisational set-up

Name of each key organisations/partner involved, type of organisation, its role in FAIR 2.

World Neighbors is the main implementing agency. It will be assisted by the Kenya Network for Dissemination of Agricultural Technologies (KENDAT), which will be responsible for the programme in Eastern region. The Kenya Agricultural Research Institute (KARI) will be responsible for monitoring and evaluation (M&E) of the pilot projects, and this will be done in collaboration with the implementing partners and with the farmer organisations that will be participating in the LISF project.

Profile of Key Partner Organisations

World Neighbors:

World Neighbors: WN is an international NGO registered locally in Kenya, Uganda and Tanzania. In East Africa, WN intervenes in the areas of Sustainable Agriculture and Rural Livelihoods, Community based natural resources management, community and reproductive health. We also have cross cutting themes namely, local capacity building, gender and HIV/AIDS. In Kenya we are currently working in Nyando and Busia districts. WN philosophy is on building capacity of local communities to manage their own resources and affairs. WN has experience in facilitating local innovations and three of its staff are already trained in PID (Qureish is a national facilitator on PID and was trained in Ethiopia). WN also has immense experience in working with rural and marginalised communities and is well equipped to facilitate the LISF process. It has developed financial guidelines and mechanisms for funding community organisations. With regards to LISF, WN will pilot PID jointly with other organisations especially on issues of natural resources management, food and nutritional security, marketing and value addition, integration of HIV/AIDS and agricultural productivity.

Kenya Network for Dissemination of Agricultural Technologies (KENDAT):

KENDAT is a non-governmental organization (NGO) whose vision is to create a responsive Kenyan smallholder agricultural business sector, with reduced gaps in technology, markets and other information, hence a sustained fight against poverty.

KENDAT's mission is to engage community groups in innovative partnerships towards unlocking their entrepreneurship and business potentials, to meet their development challenge. KENDAT promotes sustained rural and peri-urban development through advancing capacity for technological end-users across the agricultural value-chains to establish empowering Learning Alliances with enterprise development supporters. KENDAT operates within three key specialty areas, namely Conservation Agriculture Advancement, Agro-Enterprise Support and Agricultural Power Exploitation including humane utilization of draft animals and particularly donkeys. KENDAT works through catalytic development interventions in inclusive partnerships that allow for empowerment and active participation of poor communities to challenge themselves into action and make informed demands on their development supporters. KENDAT has worked intensively in 7 Districts of Kenya but runs a weekly radio programme on KBC Kiswahili that covers the entire country, and beyond. KENDAT has close work partners in Uganda, Tanzania, Ethiopia, Sudan, Ghana, Malawi, Zambia, Zimbabwe, South Africa, Namibia, Lesotho, UK, Sweden, Germany, Italy, US, Brazil, India, Pakistan, Jordan, Egypt and India.

KENDAT together with farmers has implemented numerous programmes on promoting camel traction in semi-arid areas, supporting use of oxen for draught work, improving donkey welfare and utilization, promoting conservation agriculture and enhancing provisions for rural and peri-urban transport services in Kenya.

Current research and development work under-takings at KENDAT include: On-farm Conservation Agriculture (CA) practices and piloting through Farmer Field School (FFS) organizational and extension approach – supported by FAO of UN (with German Trust Fund) and VETAID; Heshimu Punda (A Brooke Hospital for Animals Partnership) Programme: welfare and Risk Assessment Programme for Donkey Welfare to determine appropriate and effective interventions as a prerequisite for sustainable donkey welfare, business practice and work environment.; Agro-Enterprise support (collaborating with NRIL supported by DFID and IFRTD): Rural transport and marketing support and poverty watch through establishment of Community Parliaments; Consultancy wing: KENDAT will occasionally undertake consultancy assignments that fall within the mandated and associated specialty areas described above.

In the LISF pilot projects, KENDAT will be responsible for the LISF funded activities in the Eastern region of Kenya. Most of the activities in this region will have to do with natural resource management and increasing agricultural productivity, given that the region is semi-arid and suffers from both chronic and transitory food insecurity.

Kenya Agricultural Research Institute (KARI)

KARI is a national research institution that develops and disseminates technologies to increase productivity, the post-harvest value of agricultural and livestock products, while conserving the environment. With 22 main research centres and 14 sub-centres located throughout the country, KARI aims to be an institute of excellence in agricultural research and technology transfer by adopting participatory approaches, thus contributing to an improved quality of life for all citizens of Kenya. The main function of KARI is to conduct research that develops new or improved products and technologies, which add value to existing ones and are of significant benefit to the end-user, primarily the farmer and agribusiness entrepreneur.

The key responsibility of KARI in the LISF programme will be monitoring and evaluation of the programmes. This implies that KARI will be involved in the initial planning, implementation and M&E process of the LISF. Researchers at the KARI centres located in the project sites will support farmers with their experimentation, where necessary. The project will draw synergy from the existing KARI led Farmer Field Schools (FFS) which will also be used for demonstration and dissemination of information on innovations by farmers and those developed by researchers and farmers in joint experimentation. Other programmes coordinated by KARI from which LISF will learn and where possible build on their existing local structures are: the Agricultural Technology and Information Response Initiative (ATIRI) and the Kenya Agricultural Productivity Programme (KAPP).

Brief Information on ATIRI and KAPP

AGRICULTURAL TECHNOLOGY AND INFORMATION RESPONSE INITIATIVE (ATIRI)

The Agricultural Technology and Information Response Initiative (ATIRI) was launched by KARI in June 2000. The initiative was launched with the main aim being to empower the farmers to articulate their technology and information demands to service providers, as well as to empower service providers to respond to the demand.

This was in response to concerns that agricultural technologies developed by KARI and other research organizations were not having the desired impact on food security, household incomes and sustainable natural resource use.

The ATIRI approach adopted a paradigm shift from the traditional 'supply' to a 'demand' orientation. This was based on the fact that KARI and its national, regional and international technology development partners had baskets of appropriate technology options which were potentially accessible to farmers. Farmers were also deemed to be better judges of their technology and information needs, based on their agro-ecological and socio-economic circumstances.

The initiative encourages farmer groups and community-based organizations (CBOs) to articulate their demands through proposals designed according to ATIRI guidelines (Kamau et al., 2005). These proposals are submitted to the nearest ATIRI-participating KARI centres for review by a Regional Steering Committee (RSC). If successful, a seed grant and technical backstopping are provided to the farmers by the concerned research centre. The farmers account for the funds through the centre. Such groups are encouraged to develop a revolving fund scheme for use in accessing more technologies and information from the researchers. Researchers are expected to collect feed back information for incorporation into their research projects.

THE KENYA AGRICULTURAL PRODUCTIVITY PROJECT (KAAP)

The Kenya Agricultural Productivity Project (KAPP) is a Government of Kenya, World Bank-supported multi-sectoral and multi-institutional project which was launched in 2004. The project has a long-term objective of increasing agricultural productivity. It contributes to the Government's Strategy of Revitalizing Agriculture (SRA) whose objective is "to provide a policy and institutional environment that is conducive to increasing agricultural productivity, promoting investments and encouraging private sector involvement in agricultural enterprises and agribusiness."

KAPP contributes to the above objective through four project interventions which are policy and institutional reforms, extension system reform, research system reform, and farmer/client empowerment. Towards research system reform, the aim is to reform the agricultural research sub-sector so that it encompasses a plurality of actors to enhance efficiency and accountability.

Mechanisms for collaboration, MOU, working group, role NSC

A steering committee of key players in the implementation of the LISF pilot project namely, World Neighbors, KENDAT and representatives from the Prolinnova Kenya Task Force, farmer groups and NGOs will be involved in preparing the agreement to be signed by partners in the LISF project. Guidelines for LISF management will be developed by the steering-committee. The draft agreement and guidelines will be shared with the Task Force members for their input. The Task Force's role will be to provide guidance to the PROLINNOVA country programme activities including the Local Innovation Support Fund (LISF).

Capacity building strategy

- *Target groups for capacity building*

Capacity building will be done prior to and during the implementation of the LISF. The training will focus on creating awareness on LISF, participatory innovation development, farmer-led experimentation, and M&E.

Training workshops will be organised for farmer groups, NGOs, extension agents from the MoA, selected development agents and researchers working in selected KARI centres situated in the LISF project areas.

- *Purpose of proposed capacity building*

Capacity building will be linked to planning of the different activities of the LISF i.e. establishing ToR for the feasibility study, preparing selection criteria and guidelines for implementation of the LISF, actual piloting of LISF and M&E, etc. Capacity building will be done for the following reasons:

- a. To create awareness about the LISF pilot projects, their purpose and implementation guidelines;
- b. To provide a better understanding to participants from various institutions about the concepts of local innovation, Participatory Innovation Development and farmer – led documentation and encourage their use among stakeholders;
- c. To link up farmer innovators with researchers and other stakeholders in innovation development/experimentation;
- d. Strengthen linkages between stakeholders in agricultural research and development.

- *Content of capacity building, main topics*

Broad topics for capacity building will include but not limited to the following:

- a. Introduction to the concept of Local Innovation Support Fund (LISF) and Farmer access to Innovation Resources (FAIR)
- b. Participatory Innovation Development
- c. Lessons from other countries implementing LISF pilot projects e.g. Uganda, South Africa and Nepal
- d. Selection criteria and management of the Local Innovation Support Fund
- e. Record keeping and reporting by farmers
- f. Monitoring and Evaluation strategy for LISF activities
- g. Farmer Led experimentation
- h. Farmer- Led Documentation
- i. Intellectual Property Rights and Innovation

- *Proposed activities*

- a. Organise and hold three sensitisation workshops on LISF in the first year- one workshop in each region where LISF will be implemented and 1 national workshop involving different stakeholders in the country programme;
- b. Organise three workshops on PID – two of the workshops with participants comprising farmer innovators, extension agents and development agents and the other for TOTs drawn from partner organisations (farmers, researchers and extension agents in project sites);
- c. Organise and hold three 3-day workshop on the principles of Local Innovation Support Funds: criteria for selection development and selection procedures in close collaboration with farmer groups and/or CBOs, implementation of LISF, and management of the LIS, much content on group dynamics.
- d. Organise one workshop on M&E: review of M&E tools

M&E plan

From previous FAIR experiences (see table); compare M&E notes in RF proposal.

Training of partners involved in the M&E will be done focusing on the M&E framework and tools developed by the international PROLINNOVA Secretariat. Partners will review the M&E tools and their relevance to the prevailing situation within the country programme. Adjustments to the M&E tools will be done if necessary.

The Kenya Agricultural Research Institute (KARI) will be responsible for the M&E within the country programme. KARI will work closely with implementing organisations (World Neighbors, KENDAT), farmer groups, CBOs to carry out the M&E. M&E will be conducted on regular basis. The frequency to carry out the M&E exercise will be decided upon by all stakeholders involved in the process.

Institutionalisation/replication strategy

- *What is your present strategy or model – for testing during FAIR phase 2 - to make sure that LISF will spread more widely and become sustainable mechanisms for encouraging PID*

To institutionalise LISF, partner organisations will be involved from the onset of the programme in the planning, implementation and M&E. The following will be done to institutionalise LISF:

Training of staff in partner organisations (World Neighbours, KENDAT, farmer organisations, and other partner organisations that will work closely with farmers in the LISF pilot sites) will be done to ensure that they fully understand what LISF is about. A stakeholders training workshop will be held to create wider awareness about the programme. Deliberate effort will be done to incorporate the LISF approach within partner organisations project activities, using partners' resources for sustainability e.g. using KARI's FFS, MoA FFS and building LISF into the farmer/ community organisations' programme.

Involvement of research and academic institutions: Researchers from KARI and academic public universities (e.g. Egerton university, Jommo Kenyatta University and Moi University) that have been active in PROLINNOVA activities will be involved in the feasibility study, baseline survey, piloting of LISF and joint experimentation with

farmers. In each case the farmer will apply for the LISF and in the budget line, indicate that the activity will be a joint experimentation between the farmer and the researchers. Researchers will also be involved in validation of innovations, M&E and publication of scientific papers on the innovations and acknowledge the input of farmers co-authors of such papers. This will promote recognition of farmers and their work and facilitate wider dissemination of the innovation. Other institutions interested in Prolinnova activities will be encouraged to join the network.

Involvement of the Ministries of Agriculture, Livestock Development and Natural Resource Management: In order to receive support for the programme from the government, the ministries' extension agents will work closely with farmer innovators to develop innovations and widely disseminate information about the innovations. Invitations to LISF workshops will be extended to the mentioned ministries so that they can be informed about LISF and lobby for their support. Initiatives similar to LISF within the country by other actors and especially the Ministry of Agriculture will be identified and efforts made to identify how the Ministry could collaborate with PROLINNOVA Kenya in the LISF pilot project.

Replication Strategy: In the first and second years, the LISF pilot projects will be limited to a few districts in the pilot sites in Eastern and Western regions. In the third year, farmers innovators will widely share about their innovations in a forum for farmer innovators, an activity that will encourage other farmers either to try out the innovation on their own fields and/develop their own innovations. Efforts will be made by the participation institutions to up-scale PID in their current programmes and activities. PROLINNOVA Kenya partners within the country programme will be regularly updated on the happenings in LISF and encouraged to start similar initiatives where possible with own funding or funding from other donors.

Dissemination strategy

- *Whom to target*
- *For each target group, what is the main purpose of exposing them to LISF*
- *Proposed best ways to reach each target group, type of activity or publication needed*

The following stakeholders will be targeted during dissemination of information on innovations and LISF: individual farmers, farmer groups, members of CBO's working in value addition, fisheries, natural resource management, extension agents, policy makers, development agents, researchers at research and academic institutions offering agricultural and natural resource management courses.

For all groups targeted, the main purpose of exposing them to the information is to create awareness about PROLINNOVA and provide them with the opportunity to better understand LISF and its principles. In addition to the awareness creation among farmers, it is hoped that through information sharing, more farmers are likely to be involved in innovation development and increase the uptake of knowledge and skills on the existing innovations and those that will be developed. Communication on LISF to CBOs and NGOs in agriculture will promote the integration of LISF within their programmes and hence encourage allocation of funds by the institutions to LISF activities contributing to sustainability of LISF within the country programme.

Researchers will be targeted to sensitize them on the need to work closely with farmers for ease of uptake of developed agricultural innovations. At academic institutions, communications on LISF, PID, and the concept of promoting local innovation will inform administrators, researchers and students at the institutions about the importance of their involvement in participatory research focusing on local innovation. Such communication will also encourage integration of PID approaches within the curricula and / development of a curricula encompassing PID approaches.

Policy makers will be targeted so that they can realise the need to put in place policies that will promote local innovation development and protect the farmer innovators. Having been sensitized about LISF and its relevance in improving local farmers' livelihood, food security and its contribution to sustainable resource management, the policy makers will put measures in place to ensure that LISF receives funding from the government.

Extension agents and other development workers play a significant role in information dissemination. They will therefore be targeted so as to widely spread information about the innovations and to provide support to farmer innovators.

The strategies that will be used to disseminate information will include: Farmer to farmer extension, farmer innovators forums, demonstrations on FFS, use of extension agents from the Ministry of Agriculture and KARI; use of information leaflets/brochures, email and stakeholder forums, local media.

2008 Plan (Year One) (from Month x 08 to Month y 09)

The overall purpose/ goal: creating conditions for farmers to play a more decisive role in R&D in agriculture and NRM. This will be done by strengthening local control over processes of innovation in sustainable land management in ways that contribute to improved food security and livelihoods. The focus will be on building financing and funding mechanisms from the local level upwards, co-owned and managed by local land-users, their organisations and/or supporting civil-society organisations.

Objective 1: to assess the effectiveness and impact of Local Innovation Support Funds (LISFs) as a mechanism to accelerate local innovation			
Activities	Responsible parties and their roles	Outputs	Means of Verification/ Time Frame
Carry out a feasibility study on LISF to assess previous experiences in the country with decentralised funding mechanisms to support farmer initiatives and review the specific institutional, legal and financial structures in the country and, regions in which the LISF will be piloted. Ensuring that partners are active in feasibility to build their capacity.	World Neighbours KENDAT Consultant and/ ETC-East Africa, KARI	1. Identification of appropriate institutional set-up and commitment of relevant institutions on funding local innovation 2. Establishment of a longer-term feasibility of the LISF, including future sources of funding. 3. Recommendations for action	Feasibility report 1 st week of June – End of June
Baseline survey to help identify CBOs / groups to be involved in the innovations. Identification of appropriate institutional set up.	WN / ETC East Africa: Overall coordination of the activity. KENDAT: Co-ordination in Eastern region WN: Coordination in Western region KARI: M & E in both regions	A report on viability of the project, current experiences, the current status of innovation both applied and in existence, current institutional structures	Baseline survey report 1 st week of June to End of June
Organise and hold a two day stakeholders workshop to design the structure of LISF within the country programme, organisational context ;	World Neighbors: overall coordination and coordination of the w/shop in western region	1. About 30 stakeholders participate in the development of the design for the country programme	Workshop report; Field Visit report Organisational structure form of

<p>Establishment of local/community level steering community in the two regions (Western and Eastern)</p>	<p>KENDAT coordination of the workshop eastern region Task force follow-up in both regions</p>	<p>2. LISF Design and organisational structure for the country programme in place 3. Established local /community level steering committee/task force.</p>	<p>LISF mapped out Preliminary LISF selection criteria, procedures and guidelines in place May, 2008 July, 2008</p>
<p>Piloting of the LISF project: 1. Setting up the institutional structure and registration as needed: Prepare ground for institutional establishment of LISF: training, selection of participants and induction; 2. Introducing awareness creation strategy; 3. Preparation of documentation forms, criteria and means of publicising; 4. Calling for applications, process and selection of applications (entering these into the Register), informing applications 5. Inform applicants, perhaps assist those that were turned down (referral or tweaking applications), formalise the awards and terms for those successful, simple contracts specifying action and reporting 6. Disbursement of funds to farmer innovators and CBOs in</p>	<p>World Neighbors: Disbursement of funds; Participate in selection KENDAT: Participate in selection KARI – Participate in selection Other identified NGOs; CBOs, Farmer groups</p>	<p>1. Well formed institutions in both eastern , western regions 2. Well prepared documentation forms, applications done by CBOs/group in both regions; 3. Data base on selected innovators entered in register and available; 4. Funds disbursed to successful applicants; 5. Innovators</p>	<p>Receipts and signed agreement between farmer innovators, farmer group/CBO and implementing partner organisation Farmer reports on the activities August, 2008 – September, 2008 September, 2008 (1st call for applications and disbursement of funds) March 2009 (second call for applications and disbursement of funds) March 2010 (Third call for</p>

<p>the pilot sites (Western and Eastern regions of Kenya);</p> <p>7. Pilot activities implemented in the two regions</p>	<p>World Neighbors: disbursement of funds</p> <p>KENDAT: assist in identifying stakeholders to attend workshop</p> <p>KARI: responsible for organising M&E workshop</p> <p>Farmer organisations, CBOs representatives</p>	<p>1.Data is systematically collected on functioning of the LISF and the use of a registration tool based on Ms Access</p> <p>2. Data collected on specific impact of the LISF project</p>	<p>Availability of raw data in M&E software</p> <p>M&E report</p> <p>September, 2008</p> <p>September, 2009</p> <p>September, 2010</p>
<p>Objective 2: To build capacities at all levels to use, manage, monitor and evaluate the LISFs</p>			
<p>Activities</p>	<p>Responsible parties</p>	<p>Outputs</p>	<p>Means of Verification/time frame</p>
<p>Organise and hold three -3 day workshop on Participatory Innovation Development: One workshop in Eastern Region; one in western region; and one workshop held at national level</p>	<p>World Neighbors: coordination and Facilitation in training, money disbursement, organise the western region workshop, KENDAT: organize the Eastern region</p>	<p>1. About 90 people are directly trained on PID approaches and 480 people learn from the TOT's about PID</p>	<p>Workshop report;</p> <p>Field Visit report</p> <p>September, 2008,</p> <p>October, 2008</p> <p>June, 2009</p>

<p>Organise and hold a three 3-day workshop on the principles of Local Innovation Support Funds: criteria for selection development and selection procedures in close collaboration with farmer groups and/or CBOs, implementation of LISF, and management of the LIS, much content on group dynamics.</p>	<p>RODI: Facilitation in training TF/PELUM Kenya: Organise the national workshop CBOs: to nominate representatives to the workshop</p>		
<p>World Neighbors KENDAT Back-stopper from International PROLINNOVA Secretariat IST Task Force CBOs</p>	<p>1. About 90 people (farmer innovators, researchers and extension agents) understand the type and rationale of activities that could be funded by LISF 2. Partner staff involved understands the relevant dimensions of LISF implementation and are fully capable of designing, implementing, monitoring and evaluating the LISF pilots. 3. Increased understanding of LISF in the country</p>	<p>Workshop report Applications for the LISF Booklets and/ pamphlets on criteria for selection of groups to be included in the LISF project and implementation July, 2008;</p>	
<p>Organise and hold a two day training workshop on M&E + Farmer Led Documentation (FLD)</p>	<p>World Neighbors KENDAT KARI Task Force</p>	<p>1. M & E guidelines and tools for the country programme are prepared 2. About 40 representatives from farmer organisations and other partner organisations are trained about the</p>	<p>M& E guidelines and tools for CP in place Workshop report March 2009</p>

		logic of the M&E framework and are capable of using the proposed tools and related software			M&E Plan
		3. Preparation of a final M&E Plan specific to each of the LISF pilots			
Partners:					
Objective 3: To create awareness and acceptance of the LISF among regular R &D and share findings of LISF pilot projects among stakeholders.					
Activities	Responsible parties	Outputs	Means of Verification		
Develop a dissemination strategy for different target groups i.e. farmers, policy makers, extension agents, researchers; Modalities to be followed – Institutional visit/updates, workshops ; /demos/shows/provide information on relevant websites e.g KARI; Prolinnova; production of brochures/leaflets /field days/exhibitions	Task Force World Neighbors Farmer organisations/CBOs PELUM Kenya	1. Access to information by all stakeholders increased 2. Demonstration plots to support dissemination of information on innovation established 3. Brochures and information leaflets with innovations produced and distributed 3. Lobby and advocacy framework developed.	Brochures/leaflets on innovations and LISF are available in English and Swahili FFS established Demonstration plots Progress reports July, 2008 July, 2009 July, 2010		
Innovators forums: Topical presentations by farmer innovators at forum comprised of students, researchers,	PELUM Kenya World Neighbours	1. Presentations on topical PID and innovations done at three public	Notes on presentation Reports, proceedings and		

<p>development agents to share experiences and disseminate information</p>	<p>RODI-KENYA</p>	<p>universities (Egerton, Moi and JKUAT); Presentation at conferences/symposia e.g KARI Biennial conference /Agricultural forum Increased network & linkages for all stakeholders</p>	<p>forums November, 2008 February, October 2009</p>
<p>Organise a farmer innovator information market:</p>	<p>World Neighbours Farmer groups KENDAT, PELUM-Kenya</p>	<ol style="list-style-type: none"> 1. Increased interest in development of local innovation 2. increased uptake and adaptation/adoption on new innovations 	<p>Reports, Records, Photograph and Video clips October, 2009 June, 2010</p>

APPENDIX 2: LIST OF PARTICIPANTS

LISF WORKSHOP NAIROBI

Workshop dates: 12th – 14th May 2008

	PARTICIPANT	INSTITUTION	ADDRESS	EMAIL
1	Qureish Noordin	World Neighbors	P.O. Box 14728-00800 Nrb 0733-743370	gnoordin@wneastafrica.org
2	Chris Macoloo	World Neighbors	P.O. Box 14728-00800 Nrb, 0733-788244	cmacoloo@wneastafrica.org
3	Violet Kirigua	KARI	P.O. Box 57811-00200 NRB, 0725-850390	vokirigua@kari.org
4	Dr. Kamau Geoffrey	KARI	P.O. Box 57811 Nrb, 0721-315891	gkamau@kari.org
5	Purity Kaburu	KARI	P.O.Box 57811 Nrb, 0722-432506	pkkaburu@kari.org
6	Vincent Omondi	KSSFF	c/o Pelum (k), Tel. 0722623121	kessfokenya@yahoo.com
7	David Nyagah	RODI (K)	P.O. Box 746, Ruiru, Tel. 0725-652099	davinyaga@yahoo.com
8	James Wachira	RODI (K)	P.O. Box 746, Tel. 0720-364171	rodikenya@iconnect.co.ke
9	Maryleen Micheni	Pelum (K)	P.O. Box 6123-01000, Thika, Tel. 067-31686/0723- 540417	maryleen@pelum.net
10	Jeff Kahuho	Pelum (K)	P.O. Box 6123 Thika, 0721-778939	kahuho@pelum.net
11	Carolyn Odera	Focodep (WN)	P.O.Box Rabuor – Tel. 0721-236522	Adera.caroline@yahoo.com
12	Phillip Kilaki	CBO rep. working with KENDAT	P.O.Box 1473-90100 Machakos, 073527500	

13	Damaris Musau	Rep. of a CBO working with KENDAT	P.O. Box 2001,0724- 294758	
14	Anne Wanja	KENDAT	P.O.Box 2859-00200 Nairobi	awanja@kendat.org
15	Pascal Kaumbutho	KENDAT	P.O. Box 2859-00200 Nairobi	kaumbuthos@wananchi.com
16	Francis Were	Berma	P.O. Box 42-50405 Butula,0725-368276	fwere@yahoo.com
17	Pamela Marinda	Coordinator	P.O. Box 20617-00100 GPO Nairobi	ayiera@yahoo.co.uk
18	Laurens Veldhuizen	ETC Ecoculture	P.O. Box 69, lausden.netherlands.van veldhuizen@etcul.nl	

APPENDIX 3: LISF WORKSHOP PROGRAMME

Dates: 12th – 14th May, 2008

Day 1: 12.05.2008		
Time	Activity	Responsible Persons
		Facilitator: Chris Macoloo
9.00 – 11.00	Welcome remarks/ Introduction	Chairman/Deputy Chairman
	Workshop objectives	Pamela Marinda
	Introduction to PROLINNOVA Kenya	Pamela Marinda
	Presentation by participants on PID/Local innovation work in their Organisations	All participants
11.00 -11.30	Tea Break	
11.30 – 13.00	Introduction to FAIR/LISF	Laurens
13.00 – 14.00	Lunch break	
14.00 – 16.00	Presentation of LISF Case studies Uganda South Africa Plenary discussion	John/ Ronald (From Uganda) Pamela
Day 2: 13.05.2008		
Time	Activity	Responsible person
		Facilitator: Pascal Kaumbutho
9.00 – 10.30	Lessons learnt from LISF Case studies	Pamela /Laurens
10.30 – 11.00	Tea Break	
11.00 -12.00	Presentation of draft LISF Action Plan and Budget	Pamela
12.00 -13.00	Group discussion on LISF action Plan	Pascal Kaumbutho
13.00 – 14.00	Lunch Break	
14.00 – 15.00	Plenary presentations	Pascal Kaumbutho
15.00 -16.00	LISF register	Laurens
Day 3: 14.05.2008		
Time	Activity	Responsible person
9.00 – 11.00	1. Management of LISF: management procedures: selection of TF, Management Committee/steering committee	Qureish Noordin/Pamela
	Group Discussion on:	Maryleen, Meshack

	Selection criteria: sites, guidelines for selection of participating CBO, Farmer groups, individuals etc	
11.00 -11.30	Tea break	
11.30 -13.00	Plenary discussions on guidelines/ criteria for selection	Maryleen
	Way forward Closing Remarks	Chris Macoloo
13.00 – 14.00	Lunch Break	
14 -16	Task force meeting	