



## Stimulating Community Initiatives in Sustainable Land Management



Sabina DI Prima

Sustainable Land Management (SLM) unit  
Centre for International Cooperation (CIS), VU University Amsterdam

## SCI-SLM: Theoretical underpinning

### Sustainable Land Management (SLM)

*"Looking after the land to maintain and improve its productive ecosystem functions"*

### Local Innovation (LI)

*"The development of systems that are new – in local terms – by individuals/ groups using their own creativity"*



## SCI-SLM: the hypothesis

*Spontaneous community initiatives in sustainable land management (SLM) can be a valuable weapon against the serious and interconnected problems of land degradation and poverty – and climate change – in dryland areas of Africa*

SCI-SLM builds on the success of  
ISWC and PFI projects

PFI: in three years (1997 – 2000)  
significant achievements with individual innovators



Kenya:  
more than 4,000 farmers  
visited 3 local innovators each



Tanzania:  
innovators being used as  
extension agents by  
Gov and NGOs



Uganda:  
over 600 adopters of  
local innovations

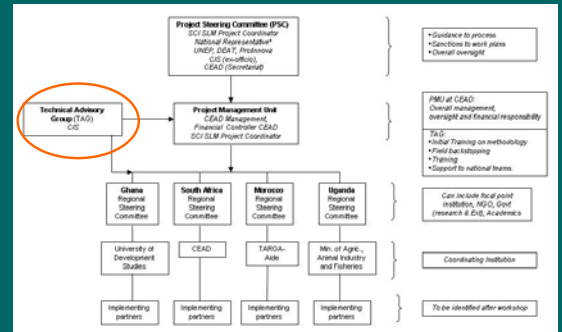
## SCI-SLM: Objectives

- **Development objective:**  
to refine ways of stimulating the further improvement and spread of *community-based SLM initiatives* to achieve local and global benefits, while simultaneously developing a methodology to upscale and institutionally embed SCI-SLM approaches at local and regional level in four pilot countries in Africa; and
- **Environmental objective:**  
to upscale SLM and reduce impacts of land degradation on ecosystem function and services

## SCI-SLM: basic facts

- **Location:** Ghana, Morocco, South Africa, Uganda
- **Duration:** 2009 – 2013
- **Main donor:** Global Environment Facility (GEF)
- **Implementing agency:** UNEP
- **Executing agency:** Centre for Environment, Agriculture & Development (CEAD), University of KwaZulu-Natal, South Africa
- **Technical Advisory Group (TAG):** CIS/VU University Amsterdam
- **Budget:** \$ 2 million (approx half from GEF, half co-finance)

## SCI-SLM: Implementation framework



## National lead agencies

Ghana: University of Development Studies

Morocco: TARGA-Aide



South Africa: University of KwaZulu Natal

Uganda: Ministry of Agriculture (MAAIF)



Inception Workshop  
South Africa  
September 2009



TAG visit Ghana  
November 2009



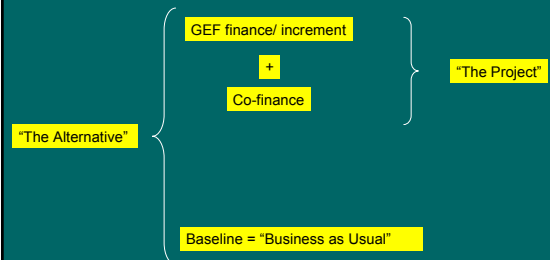
## The Global Environment Facility (GEF)

mandate:

to fund incremental costs of projects to deliver global environmental benefits (GEBs)

- Established in 1991; first tranche of funding in 1994
- Comprises trust fund managed by World Bank
- Three Implementing Agencies: WB, UNDP and UNEP
- Operations directed through the GEF secretariat headed by Monique Barbut
- Six focal areas: *Land Degradation* is newest

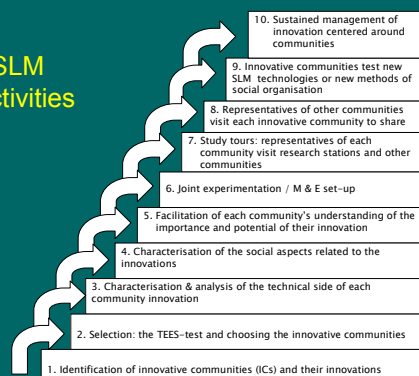
## how GEF projects are structured



## SCI-SLM TIMELINE

October-December	2009	TAG visits: Uganda, Ghana, South Africa and Morocco
September	2009	Project Cooperation Agreement (PCA) signed & inception meeting
June	2009	Full project document & CEO endorsement approved
March	2008	PIF approved / project document re-edited
January	2008	Uganda SCI-SLM technical launch
January	2008	PIF resubmission
September	2007	Project Identification Format (PIF) submitted
May	2007	GEF's Strategic Investment Programme (SIP) initiated
January	2006	Approval by GEF council....BUT GEF re-organisation!!
December	2005	Resubmission of the MSP-B
December	2004	Finishing the MSP-B & submission for approval at UNEP and GEF
Sep - Nov	2003	Project preparation missions to the four countries and drafting of "Medium Sized Project Brief"
	2002	Initial idea and concept paper

## SCI-SLM Field Activities



## Uganda case studies



William with Alex Lwakuba: Uganda Country Coordinator at District HQ

### Identification of community initiatives: the check list

#### Community/ Group:

Common interest group  
Common values/ goals/ identity  
Defined by the innovation

#### Initiative (= Innovation) in SLM:

New in local terms  
Developed by a local community/ group  
Little or no help/ money from outside  
Technically and/ or socially innovative  
Have potential to spread



Case Study One (Uganda) Rwoho  
Tree planting and social organisation



Case Study Two (Uganda) Nakasongola  
Improved pasture land



## Examples of community initiatives in SLM:

- Protection of water resources
- Joint management of forests/ wetlands
- Communal range management
- Renewable energy

### SCI-SLM: *setting standards*

1. Clear identity and boundaries of the programme
2. Genuine and relevant community initiatives
3. Recognising, Respecting and Rewarding through IPR
4. Partnerships, alliances and South-South learning
5. Engagement of research agencies and universities
6. Strengthening official procedures and channels
7. Accountability: M&E and documentation
8. Evidence-based achievements/ impacts
9. Institutionalisation
10. Setting standards for GEF's Strategic Investment Programme/ TerrAfrica

### SCI-SLM ↔ PROLINNOVA + connections

- some specific differences ...
- ... but shared origins, objectives and approaches
- three countries in common: Ghana, S. Africa, Uganda
- partners & personnel (local & international) in common
- cost-sharing
- joint reporting & website links
- potential to develop synergies through joint activities
- mutual learning

*Challenge: how to reinforce these links?*